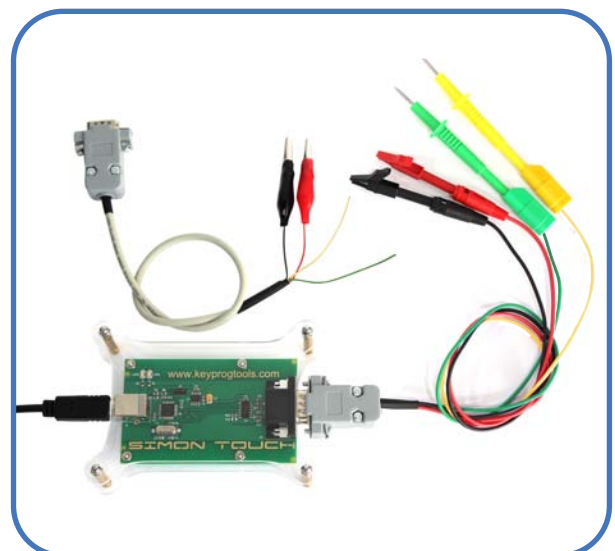


# SIMON TOUCH

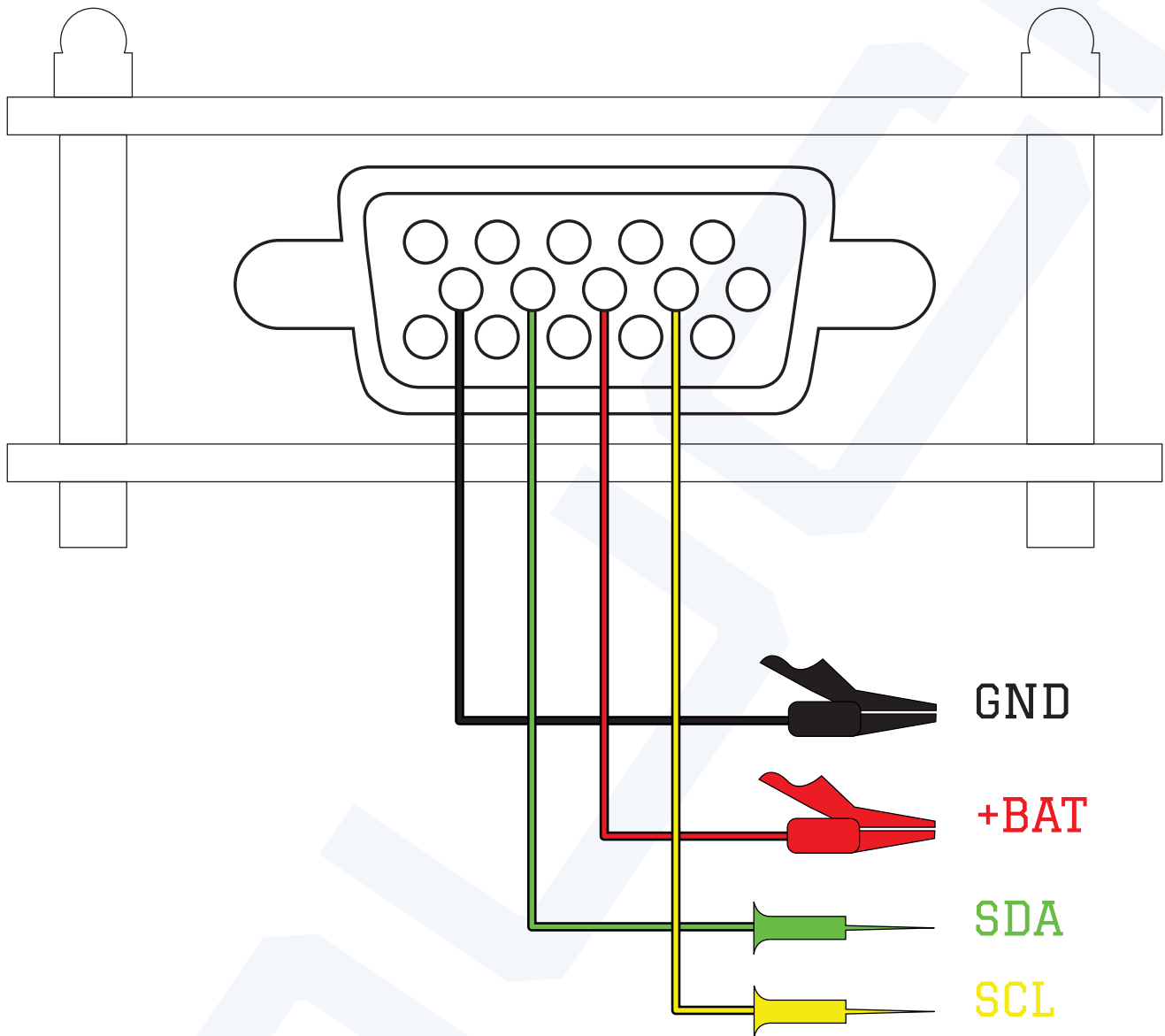
## SRK Renew Key Tool

Remotes Unlocking connections diagrams



# Connections on the keys

Connect PCF79xx pins ( or Key PCB testpads) to the device according to following picture



To connect to the PCF79xx pins you can use micro test clips (grabbers)

				
PCF7941	10	11	4	19
PCF7952	21	22	8	11
PCF7953	25	26	10	13
PCF7945	25	26	10	13

**BMW**

BMW CAS 3 Normal

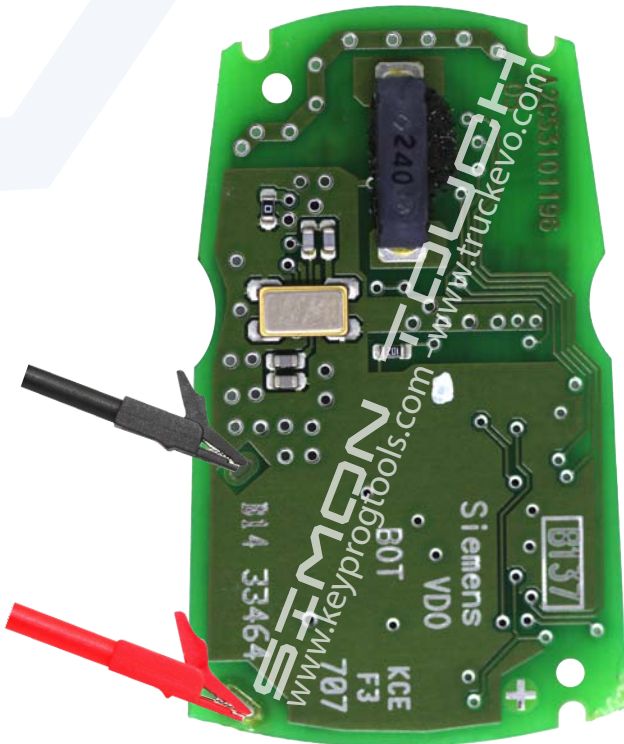
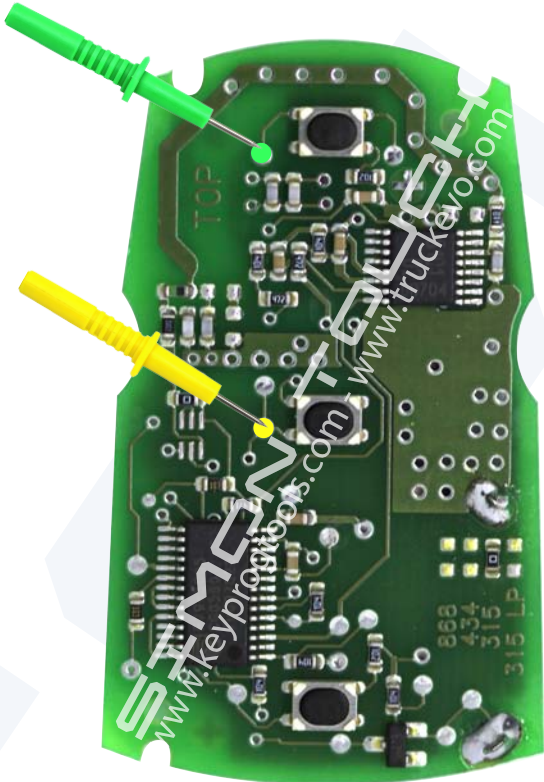
5WK - E - Series



- 5WK49125 (868MHz)
- 5WK49127 (315MHz)
- 5WK49145 (868MHz)
- 5WK49147 (315MHz)

**FRONT**

**BACK**



**BMW**

BMW CAS 3 Normal

5WK - E - Series

[www.keyprogtools.com](http://www.keyprogtools.com)

[info@keyprogtools.com](mailto:info@keyprogtools.com)

[simon.touch@hotmail.com](mailto:simon.touch@hotmail.com)

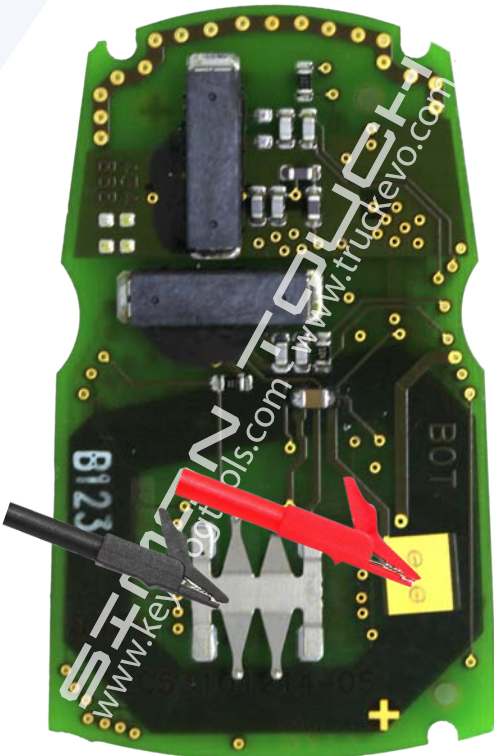
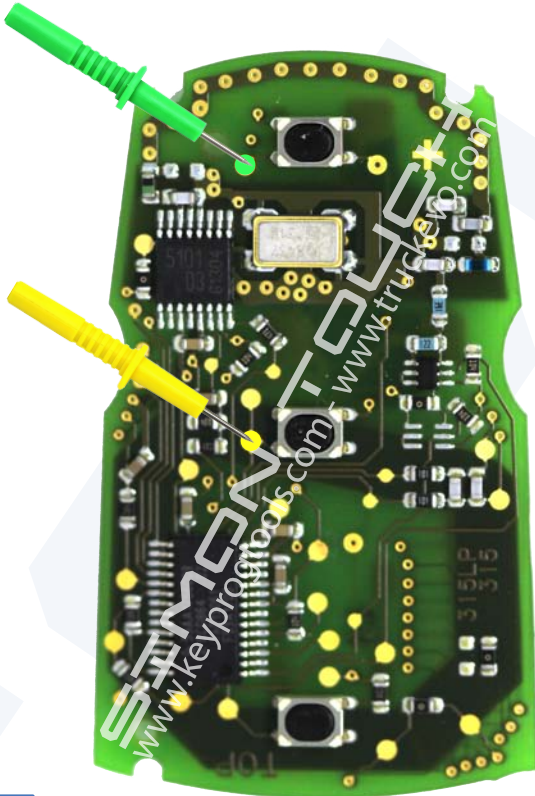
Skype: Sales@KeyProgTools



- 5WK49125 (868MHz)
- 5WK49127 (315MHz)
- 5WK49145 (868MHz)
- 5WK49147 (315MHz)

**FRONT**

**BACK**





**BMW**

BMW CAS 4 Continental

5WK - F - Series

[www.keyprogtools.com](http://www.keyprogtools.com)

[info@keyprogtools.com](mailto:info@keyprogtools.com)

[simon.touch@hotmail.com](mailto:simon.touch@hotmail.com)

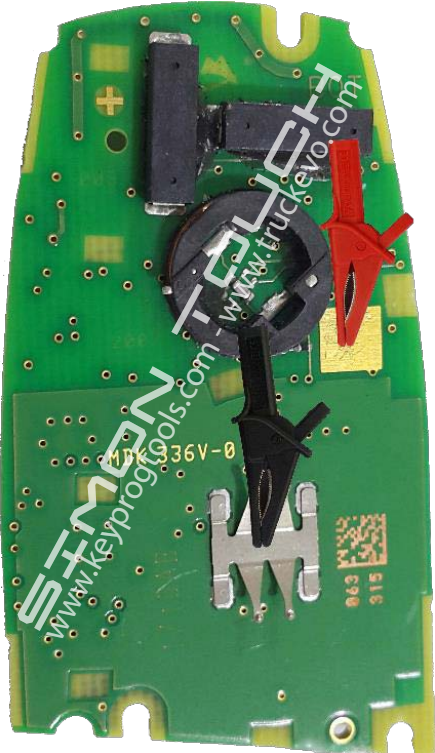
Skype: Sales@KeyProgTools



- 5WK49661 (868MHz Continental)
- 5WK49663 (315MHz Continental)
- 5WK49662 (434MHz Continental)

**FRONT**

**BACK**



**BMW**

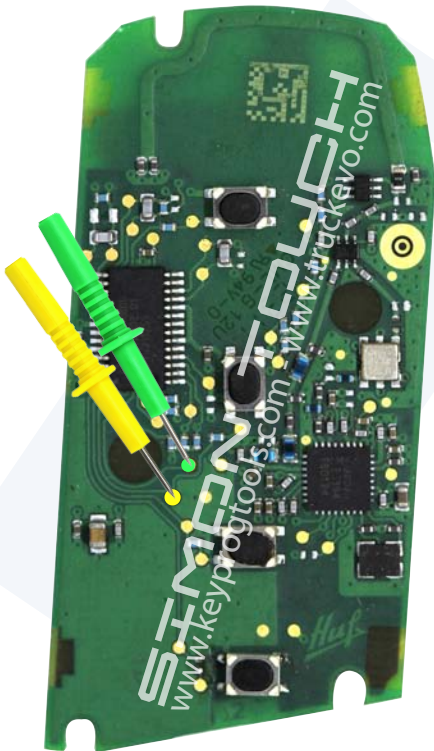
BMW CAS4 HUF

HUF - F - Series

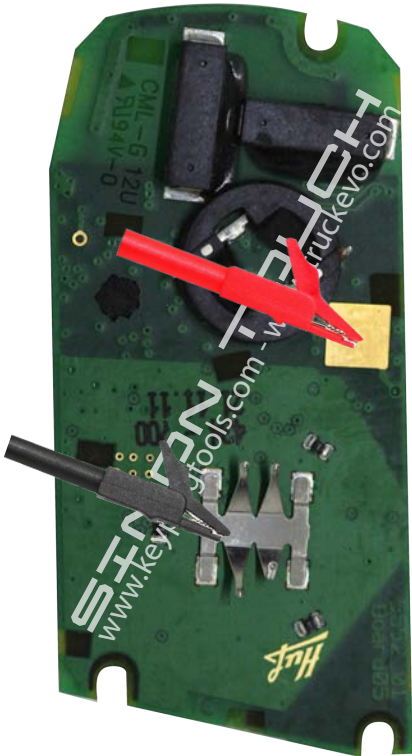


- HUF5661 (868MHz HUF)
- HUF5662 (315MHz HUF)
- HUF5663 (434MHz HUF)
- HUF5667 (434MHz HUF)

**FRONT**



**BACK**



**Chrysler**

OHT692713AA

[www.keyprogtools.com](http://www.keyprogtools.com)

[info@keyprogtools.com](mailto:info@keyprogtools.com)

[simon.touch@hotmail.com](mailto:simon.touch@hotmail.com)

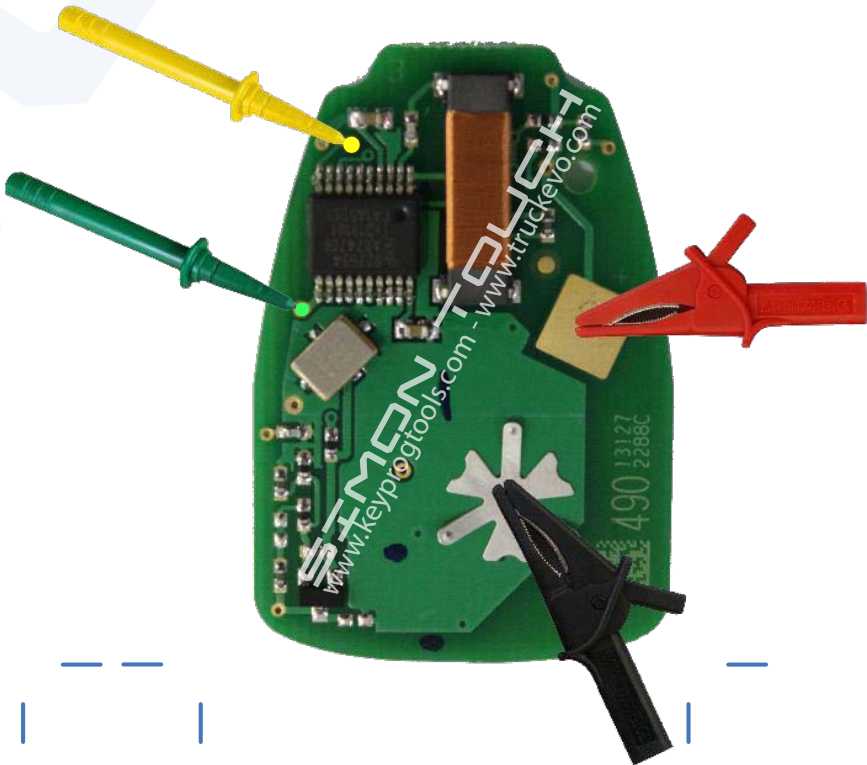
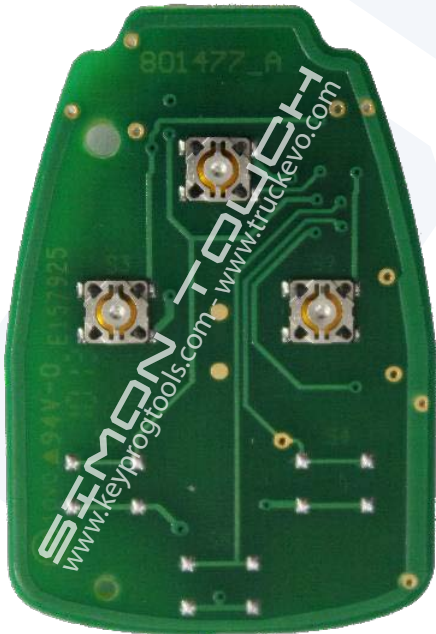
Skype: Sales@KeyProgTools



2004 - 2007 Chrysler Town & Country  
2004 - 2007 Dodge Caravan  
2004 - 2007 Dodge Grand Caravan

**FRONT**

**BACK**





**Chrysler**

OHT692427AA

www.keyprogtools.com

info@keyprogtools.com

simon.touch@hotmail.com

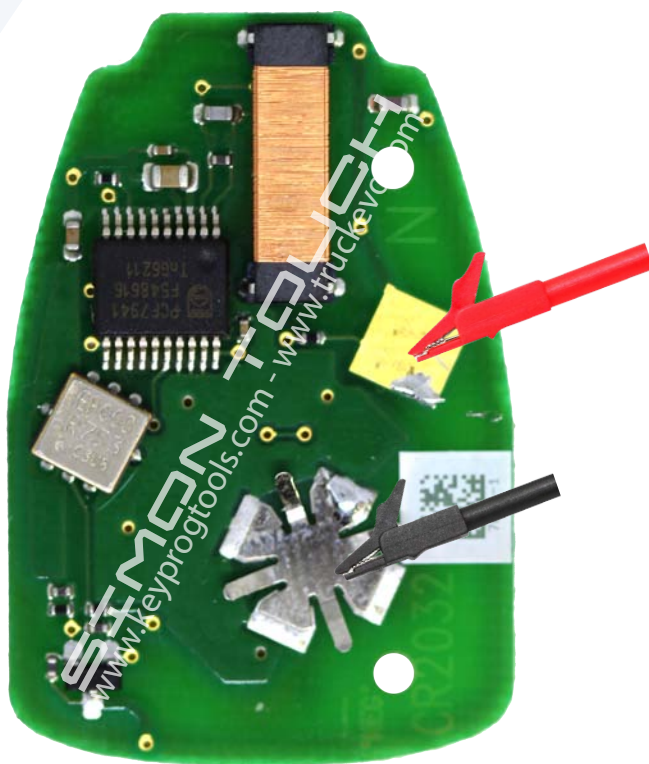
Skype: Sales@KeyProgTools



- |   |                                 |
|---|---------------------------------|
| 2007 - 2011 Chrysler Sebring                | 2006 - 2009 Jeep Commander      |
| 2006 - 2010 Chrysler PT Cruiser             | 2008 - 2013 Jeep Compass        |
| 2005 - 2007 Chrysler PT Cruiser Convertible | 2005 - 2007 Jeep Grand Cherokee |
| 2008 - 2013 Dodge Avenger                   | 2008 - 2012 Jeep Liberty        |
| 2006 - 2012 Dodge Caliber                   | 2007 - 2013 Jeep Patriot        |
| 2005 - 2007 DodgeCharger                    | 2007 - 2013 Jeep Wrangler       |
| 2004 - 2013 Dodge Durango                   |                                 |
| 2005 - 2007 Dodge Magnum                    |                                 |
| 2007 - 2011 Dodge Nitro                     |                                 |
| 2006 -2009 Dodge Ram                        |                                 |

**FRONT**

**BACK**





# Chrysler

Chrysler Kobot O4A

**SIMON TOUCH**

[www.keyprogtools.com](http://www.keyprogtools.com)

[info@keyprogtools.com](mailto:info@keyprogtools.com)

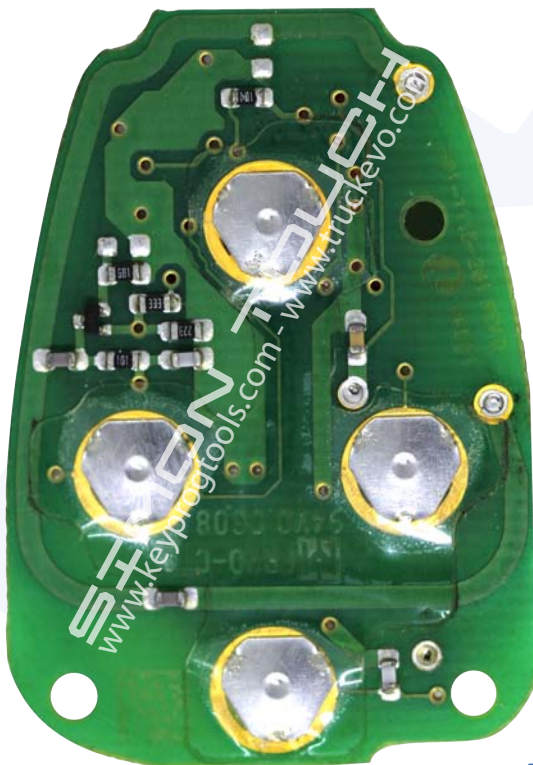
[simon.touch@hotmail.com](mailto:simon.touch@hotmail.com)

Skype: Sales@KeyProgTools



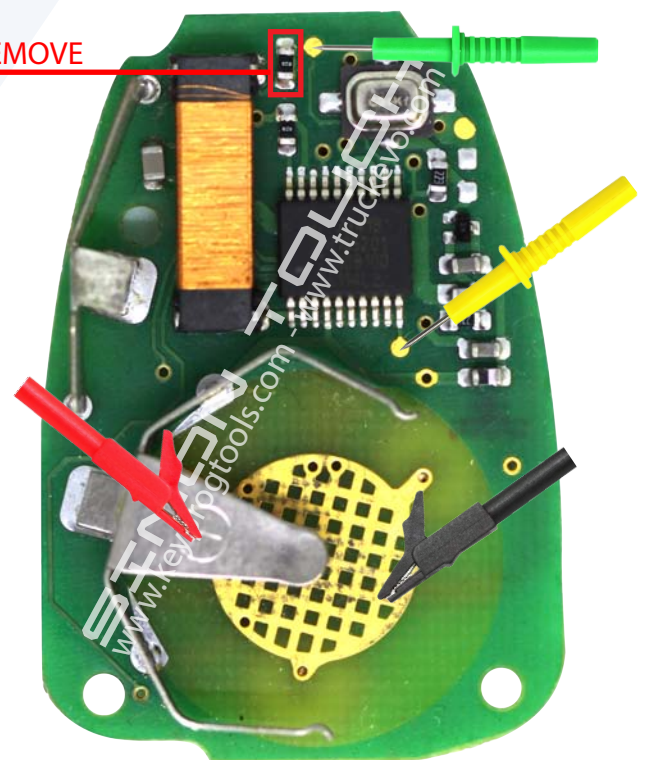
- 2007 - 2009 Chrysler Aspen
- 2005 - 2007 Chrysler 300
- 2005 - 2007 Dodge Durango
- 2007 - 2011 Dodge Dakota
- 2007-2009 Dodge Ram
- 2007 - 2013 Dodge Avenger
- 2005 - 2007 DodgeCharger
- 2007 - 2012 Dodge Caliber
- 2005 - 2007 Jeep Commander
- 2005 - 2007 Jeep Grand Cherokee

FRONT



BACK

REMOVE



# KIA - HYUNDAI

## 2 Buttons Key

# SIMON TOUCH

[www.keyprogtools.com](http://www.keyprogtools.com)

[info@keyprogtools.com](mailto:info@keyprogtools.com)

[simon.touch@hotmail.com](mailto:simon.touch@hotmail.com)

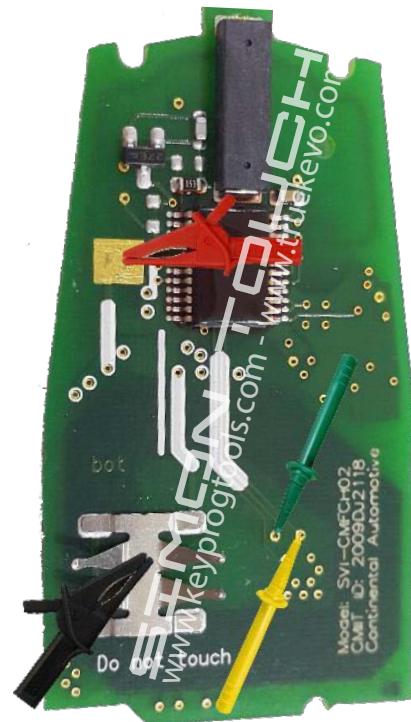
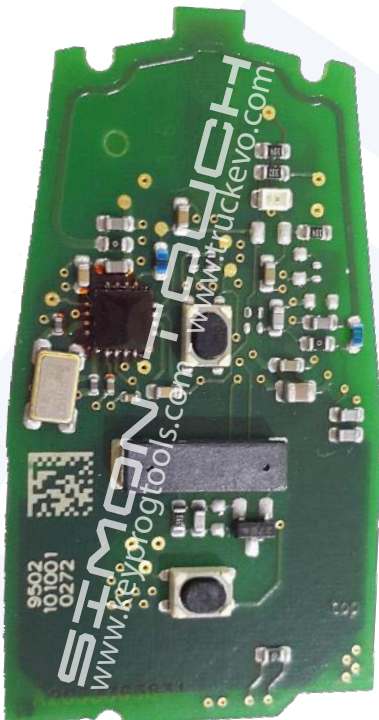
Skype: Sales@KeyProgTools



SVI-CMFCH02 / Keyless Go Key  
Chip Marking: 049620C03

FRONT

BACK



# KIA - HYUNDAI

3 Buttons

# SIMON TOUCH

[www.keyprogtools.com](http://www.keyprogtools.com)

[info@keyprogtools.com](mailto:info@keyprogtools.com)

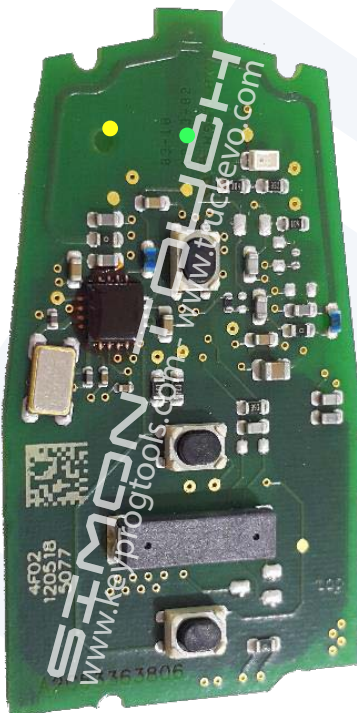
[simon.touch@hotmail.com](mailto:simon.touch@hotmail.com)

Skype: Sales@KeyProgTools

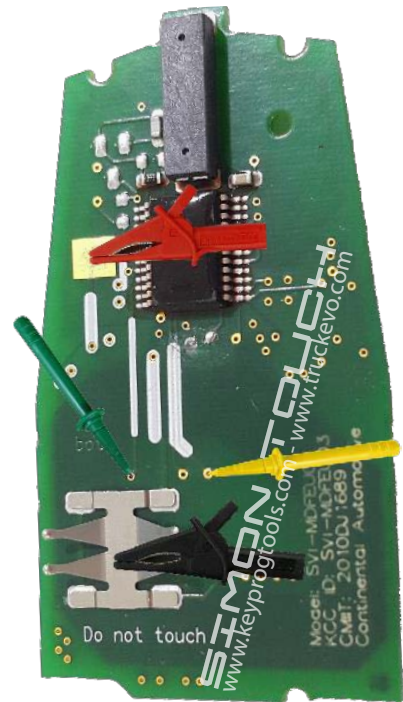


SVI-CMFEU03/ Keyless Go Key  
Chip Marking: 049620C03

FRONT



BACK





# KIA - HYUNDAI

4 Buttons

# SIMON TOUCH

[www.keyprogtools.com](http://www.keyprogtools.com)

[info@keyprogtools.com](mailto:info@keyprogtools.com)

[simon.touch@hotmail.com](mailto:simon.touch@hotmail.com)

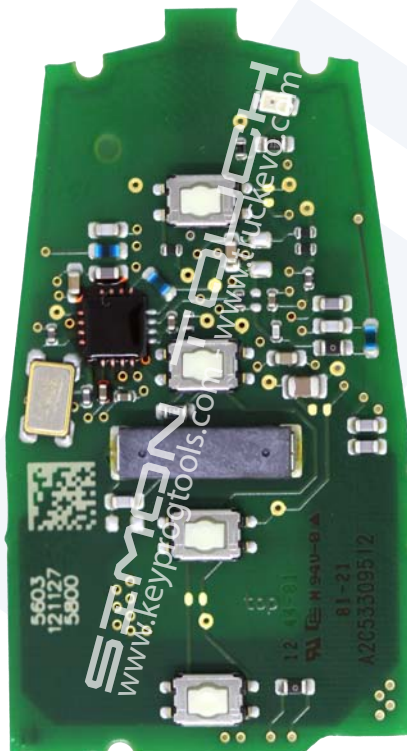
Skype: Sales@KeyProgTools



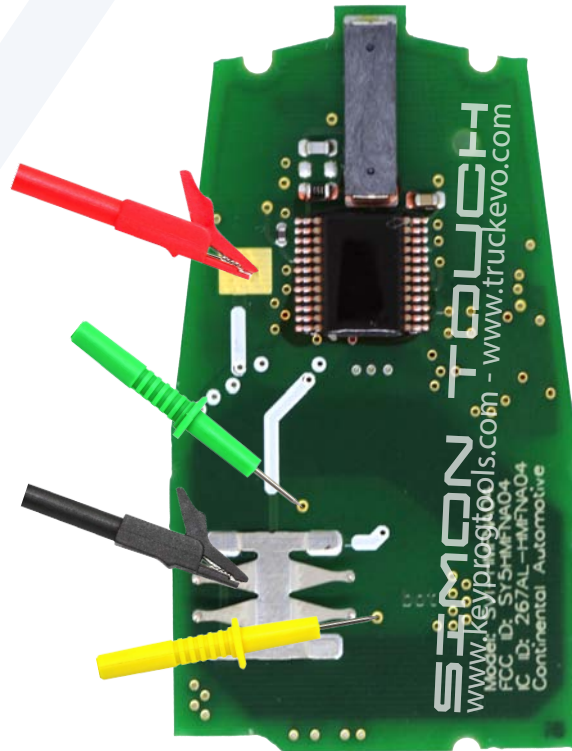
SVI-HMFKR04/ Keyless Go Key  
SVI-HMFEU04/ Keyless Go Key  
SVI-HMFNA04/ Keyless Go Key  
Chip Marking: 049620C03

2009 - 2013 Hyundai Genesis  
2011 - 2013 Hyundai Elantra  
2011 - 2013 Hyundai Sonata  
2012 - 2014 Hyundai Veloster  
2011 - 2013 Hyundai Equus  
2010 - 2012 Kia Forte Koup  
2011 - 2013 Kia Soul  
2011 - 2013 Kia Sportage  
2011 - 2013 Kia Optima

FRONT



BACK





# KIA - HYUNDAI

## Comfort Access Key

# SIMON TOUCH

[www.keyprogtools.com](http://www.keyprogtools.com)

[info@keyprogtools.com](mailto:info@keyprogtools.com)

[simon.touch@hotmail.com](mailto:simon.touch@hotmail.com)

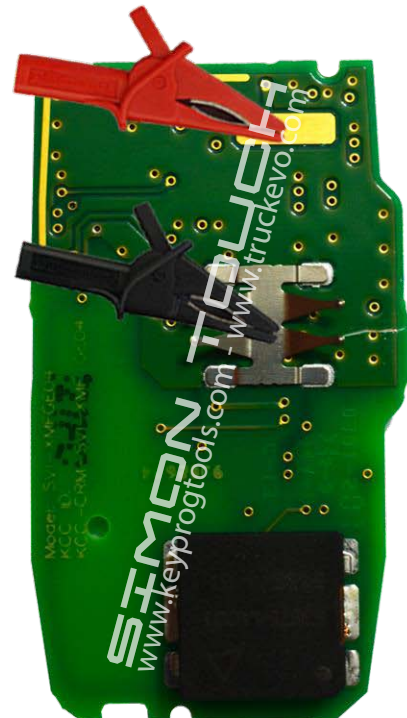
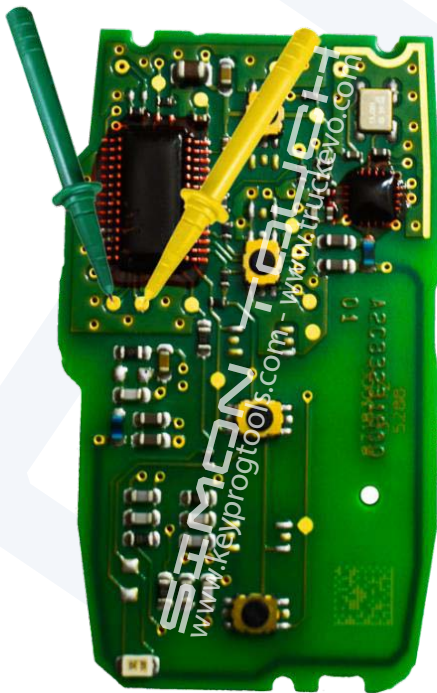
Skype: Sales@KeyProgTools



SVI-XMFGE04  
Comfort Access Key

FRONT

BACK



# KIA - HYUNDAI

Comfort Access Key

# SIMON TOUCH

[www.keyprogtools.com](http://www.keyprogtools.com)

[info@keyprogtools.com](mailto:info@keyprogtools.com)

[simon.touch@hotmail.com](mailto:simon.touch@hotmail.com)

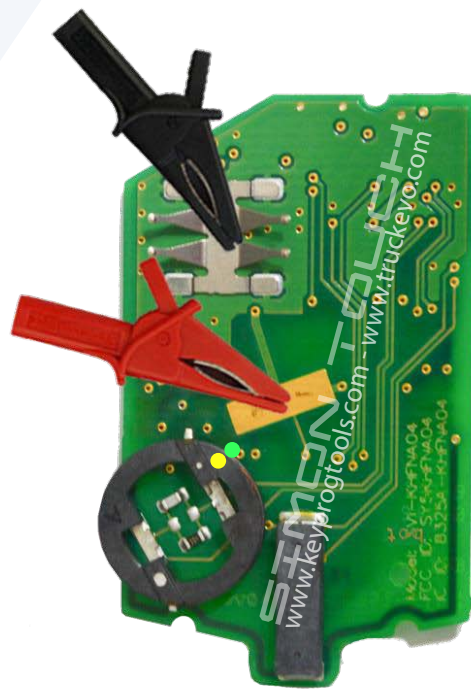
Skype: Sales@KeyProgTools



SVI-KHFGE04/ SVI-KHFNA433

FRONT

BACK



# KIA - HYUNDAI

Comfort Access Key

# SIMON TOUCH

[www.keyprogtools.com](http://www.keyprogtools.com)

[info@keyprogtools.com](mailto:info@keyprogtools.com)

[simon.touch@hotmail.com](mailto:simon.touch@hotmail.com)

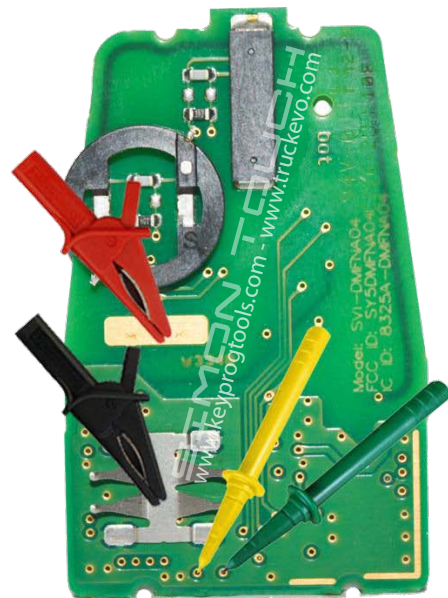
Skype: Sales@KeyProgTools

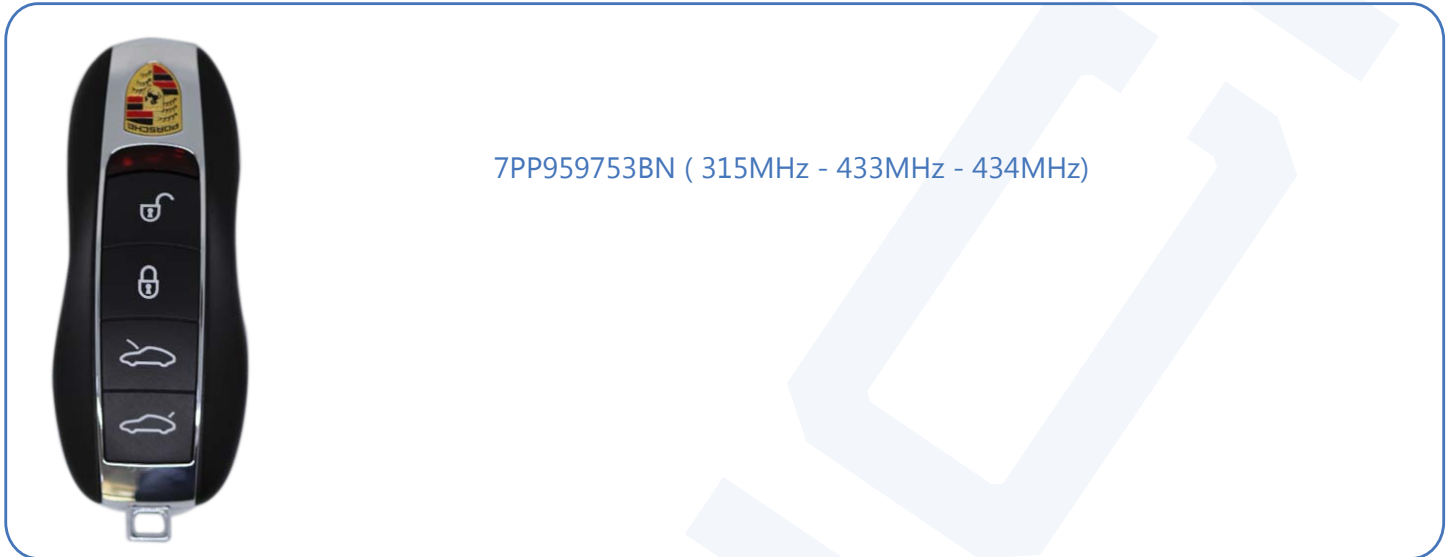


SVI-DMFGE04 / SVI-DMFNA04

FRONT

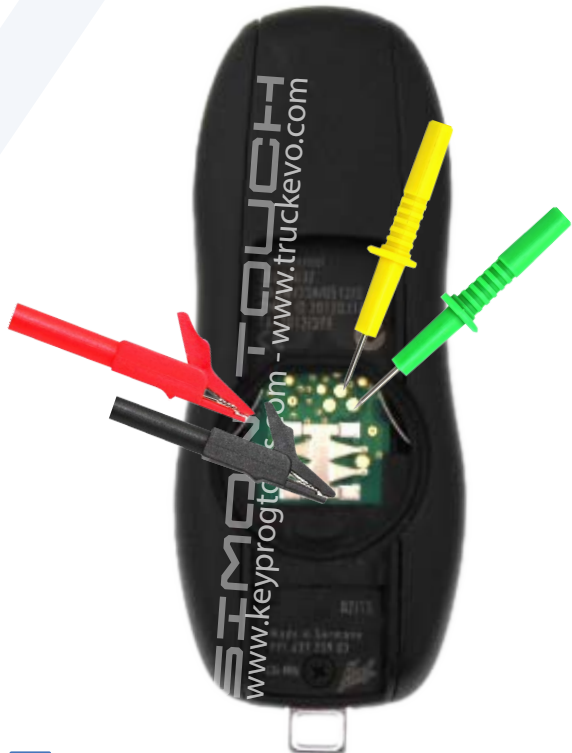
BACK





FRONT

BACK





# RANGE ROVER

**SIMON TOUCH**

[www.keyprogtools.com](http://www.keyprogtools.com)

[info@keyprogtools.com](mailto:info@keyprogtools.com)

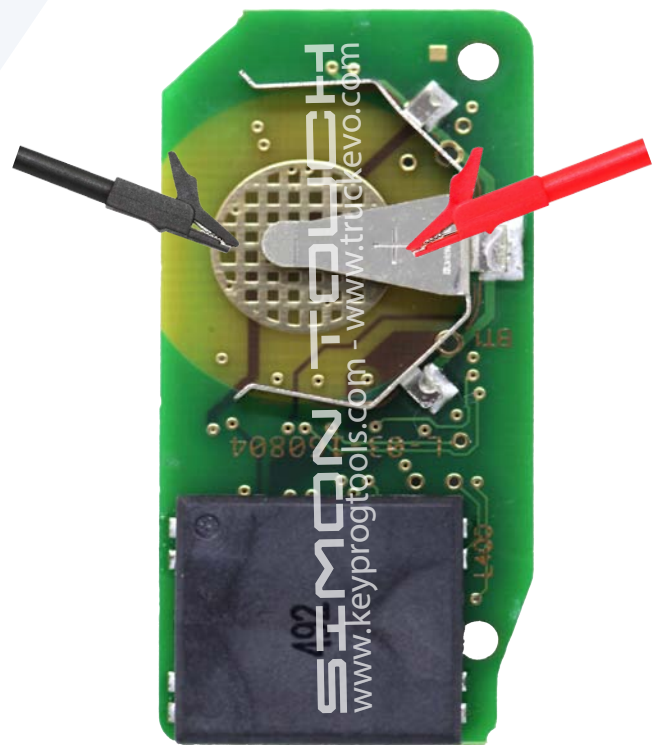
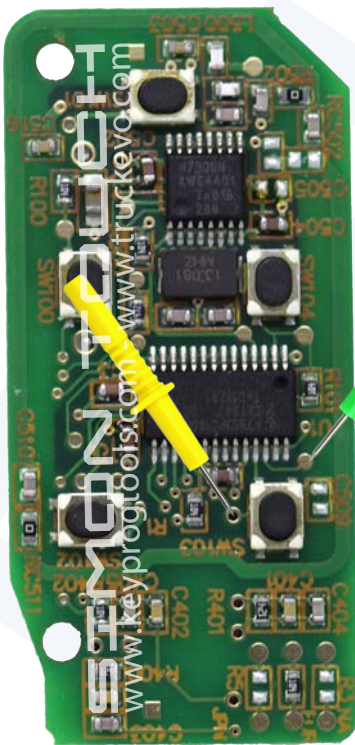
[simon.touch@hotmail.com](mailto:simon.touch@hotmail.com)

Skype: Sales@KeyProgTools



FRONT

BACK



# LAND ROVER

# SIMON TOUCH

[www.keyprogtools.com](http://www.keyprogtools.com)

[info@keyprogtools.com](mailto:info@keyprogtools.com)

[simon.touch@hotmail.com](mailto:simon.touch@hotmail.com)

Skype: Sales@KeyProgTools

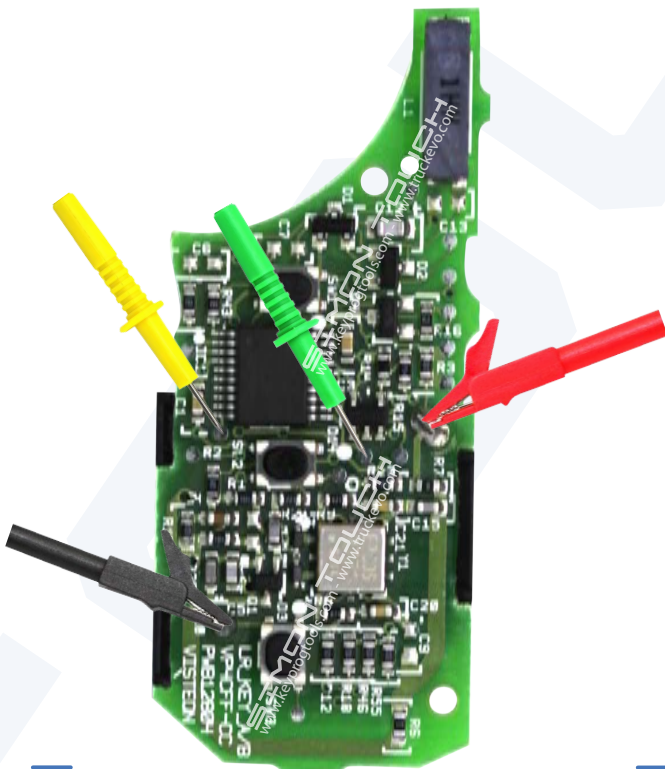


YWX000061 (434MHz, Visteon)

YWX000071 (315MHz, Visteon)

## FRONT

## BACK





8T0959754D (868MHz)

(PCB code: 233-453-111-05/06)

8T0959754G (315MHz, Smart)

(PCB code: 233-453-111-05/06)

8T0959754 (433MHz)

(PCB code: 233-453-111-05/06)

4H0959754K (868MHz, Smart)

(PCB code: 233-453-111-05/06)

4H0959754G (315MHz, Smart)

(PCB code: 233-453-111-05/06)

4G0959754K (868MHz, Smart)

(PCB code: 233-453-111-05/06)

## FRONT

## BACK

