

# SIMON TOUCH

[www.KeyProgtools.com](http://www.KeyProgtools.com)

## SKC Key Calculator

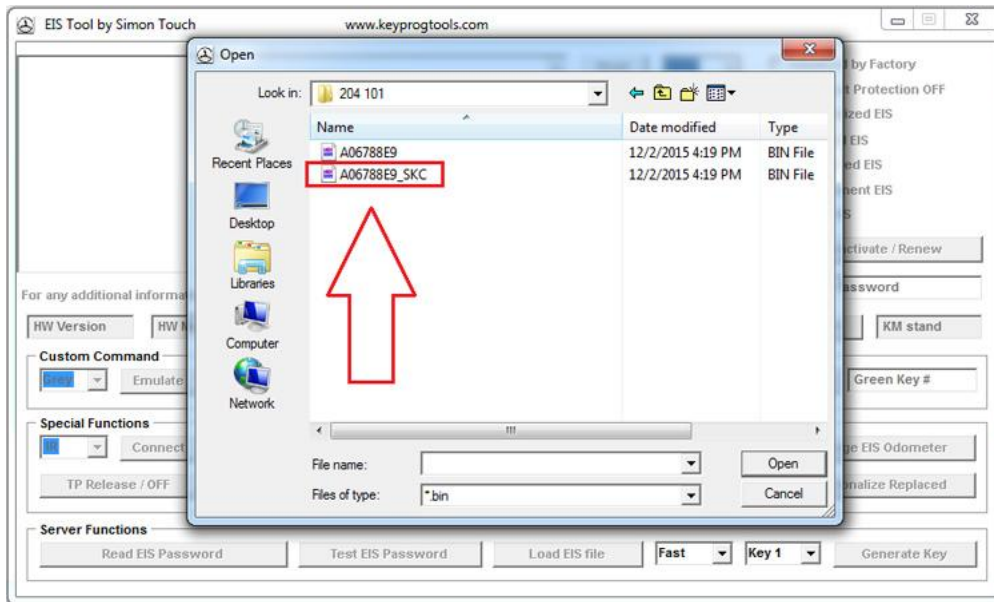
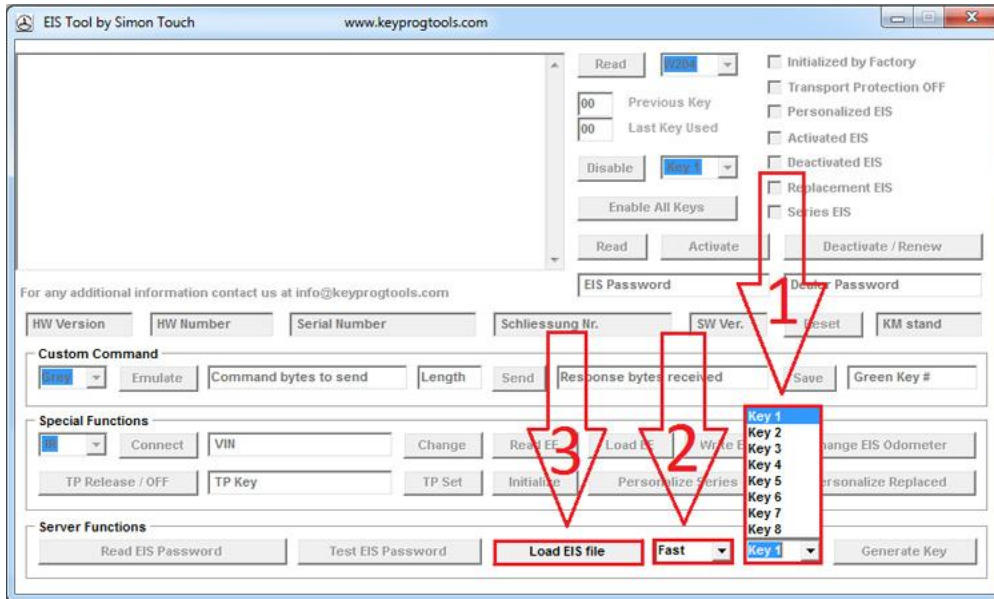
1. Plug the SKC in your PC



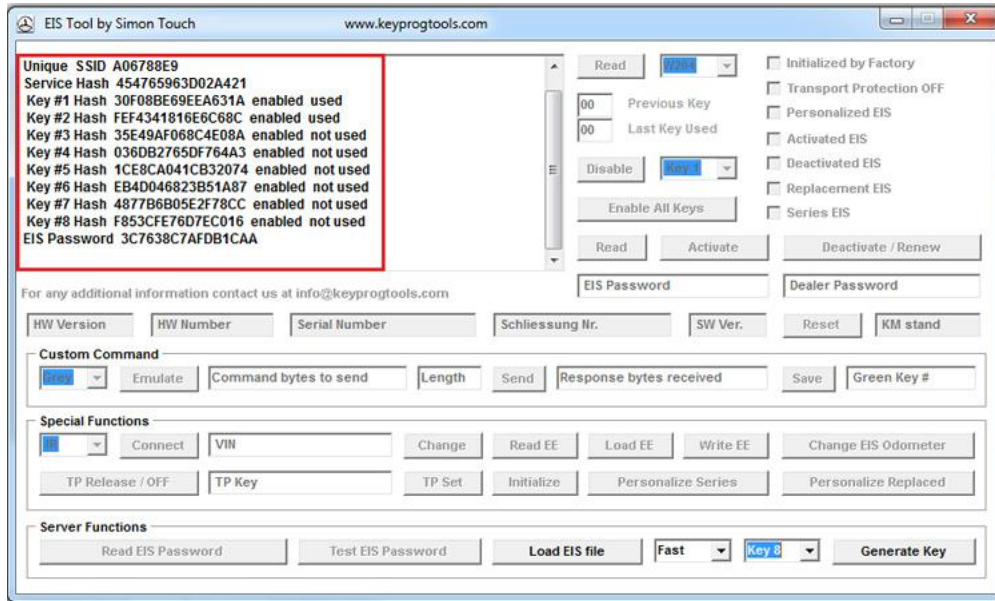
2. Open MB ALL IN ONE software and select the EIS



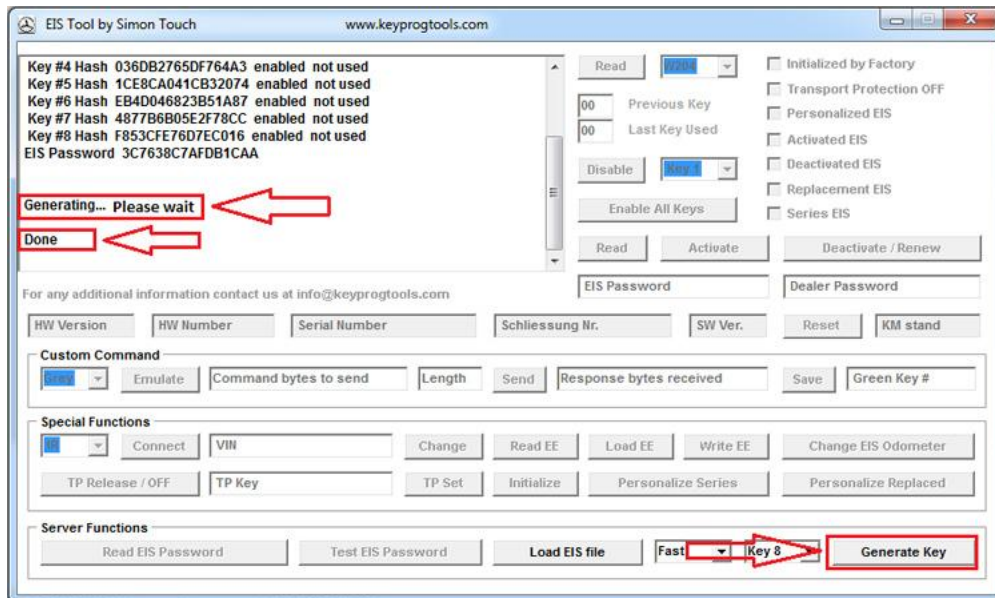
3. Select the key number then select fast or slow calculation and load the EIS dump



4. Software will show you:
  - a. Key Status
  - b. SSID
  - c. EIS Password



5. Click on generate Key button, the software will calculate the Key and save it automatically in the EIS folder



Note the software will accept ALL IN ONE EIS format only.  
 You can use our old SKC software for other formats